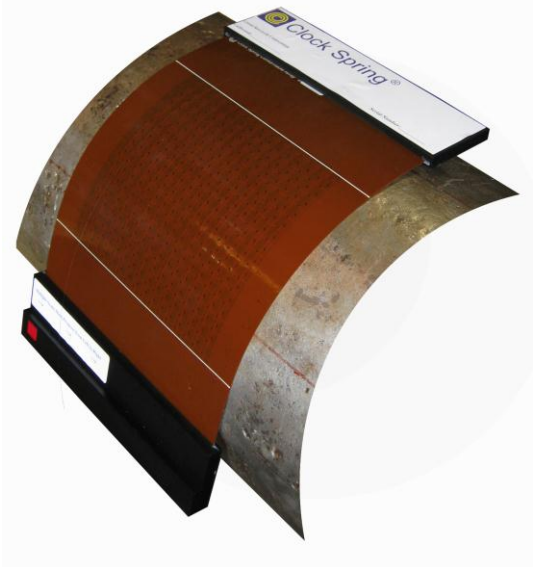
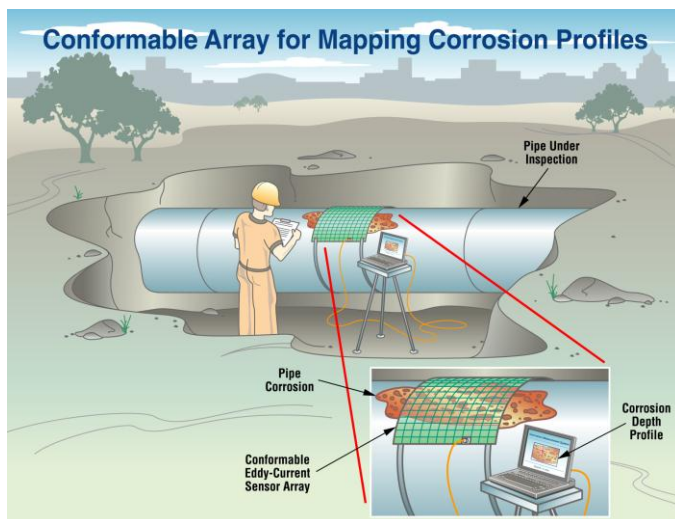


## Conformable Eddy Current Array

- Assess defects using B31, Modified B31 and Effective Area
  - Assessment graphs and pressures calculated and displayed
  - Compare field measurements to ILI data
  - Create files for record keeping
  - Create “electronic rubbings” of the actual indications
  - River bottom profiles identified
  - 3 second scan time - information immediately available
- 



## Conformable Eddy Current Array

The array consists of a flexible pad imprinted with a two dimensional array of transducers. The transducers provide a measurement of the depth, length and width of the feature being assessed and generate a three dimensional feature map. The deepest indication is identified and the operator is asked to verify this depth reading. Defect assessment is done automatically with standard graphs and safe operating pressure clearly identified. Interaction rules are applied via software and boxing can be done both via software or as directed by the operator or integrity engineer. Digital files are provided for record storage and ease of use. Files can be shared and viewed as required. Multiple scans can be made for larger indications. The scan areas are knitted together via software to produce one file for assessment and analysis.

---

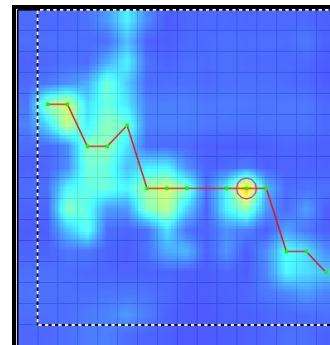
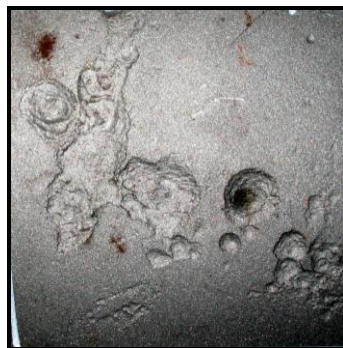
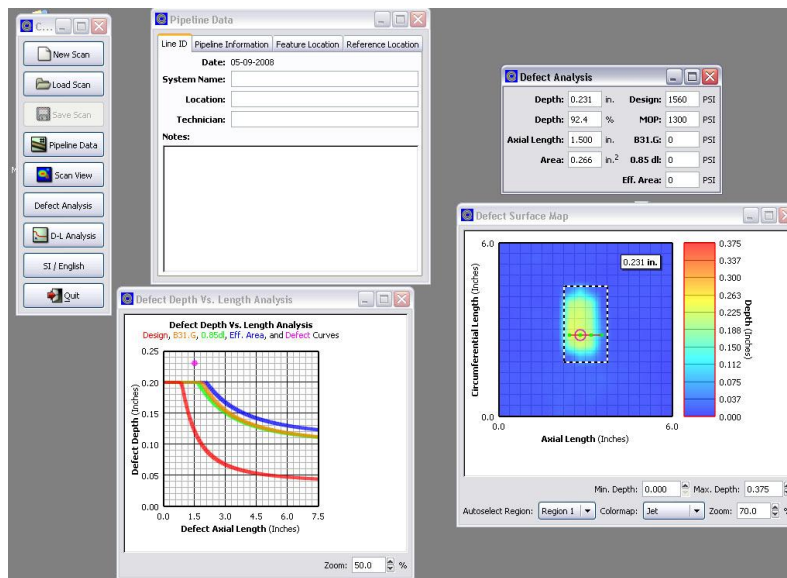
---

## Specifications

Length accuracy	± 0.18-inches (4.5 mm)
Width accuracy	± 0.18-inches (4.5 mm)
Depth accuracy typical*	± 0.020-inches (0.50 mm)
Scan area	6-inches x 6-inches (152 mm x 152 mm) (single scan)
Transducers	256 send, 256 receive
USB 2 compatible	
English and Metric unit capable	

\* Unusual anomalies may result in unusual depth readings. Anomalies under .400 inch (10 mm) in diameter or length require extra care and verification. Unusually narrow or unusually shallow and wide metal loss may also require extra care and verification. Depth accuracy should be verified for all readings above .250 inch (6.35 mm)

---



---

Clock Spring Company, L.P. • 621 Lockhaven Dr., Houston, Texas 77073, USA  
Telephone +281.590.8491 • +800.471.0060 • Fax +281.590.9528  
Clock Spring Company, L.P. • 4A The Causeway, Godmanchester, Huntingdon, Cambs, PE29 2HA, UK  
Telephone +44 1480 414 703 • Fax +44 1480 414 705

[www.clockspring.com](http://www.clockspring.com)

**ENHANCING PIPELINE INTEGRITY FOR WORLD CLASS OPERATIONS!**